

# MORTISE RING LATCH

FROM

SNUG COTTAGE HARDWARE

Phone (800) 637-5427

Fax (519)474-3337

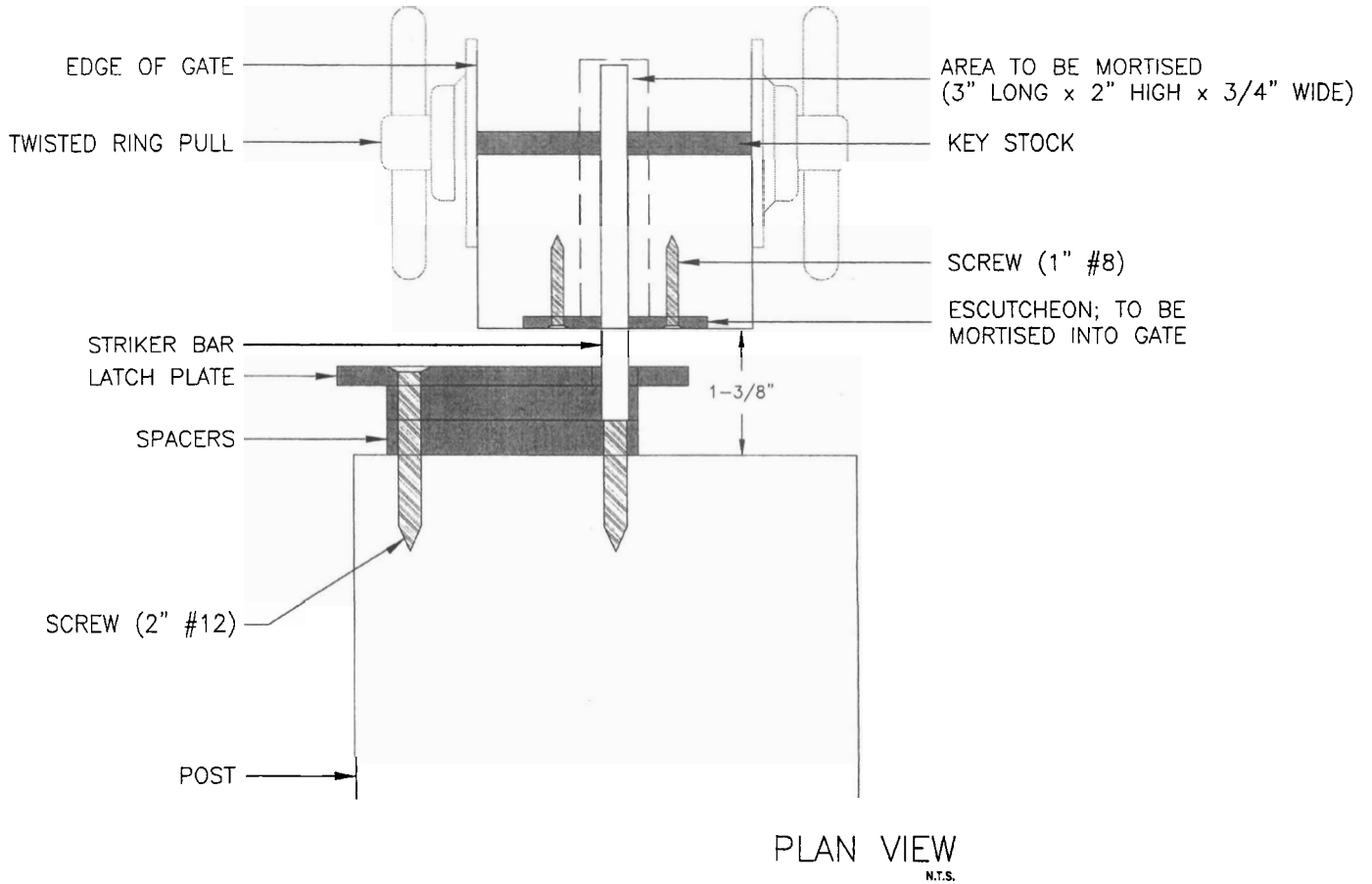
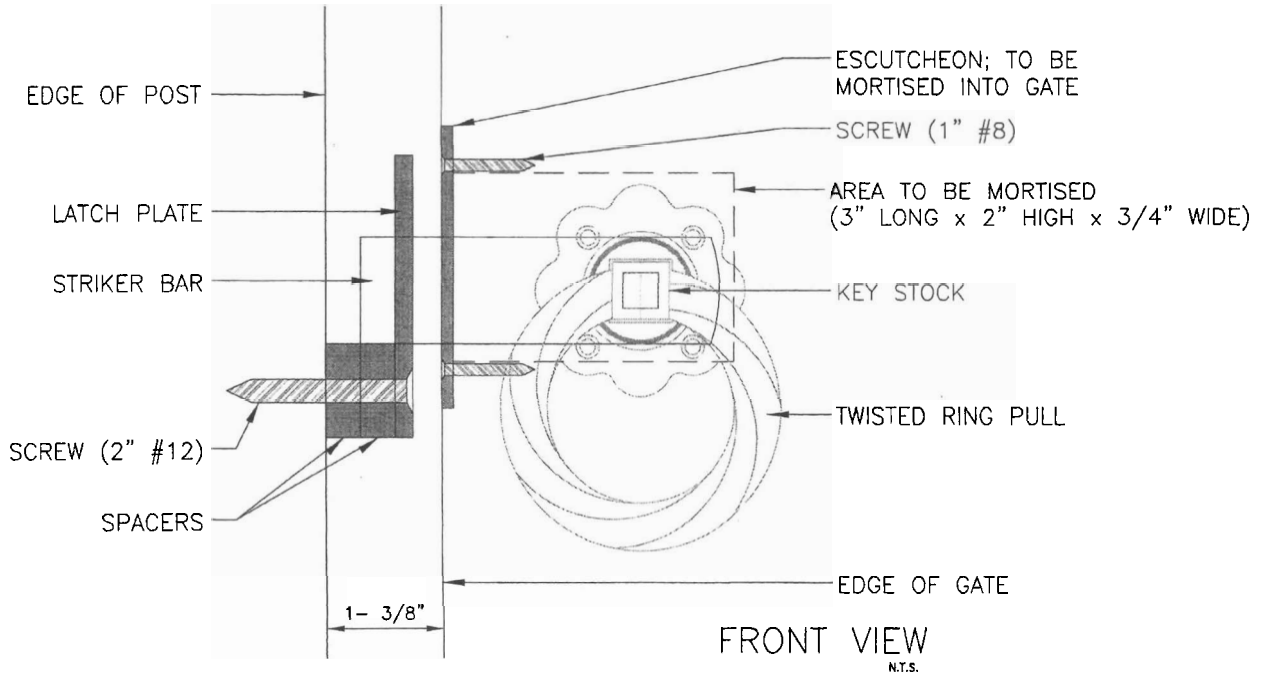
[www.snugcottagehardware.com](http://www.snugcottagehardware.com)

The mortise ring latch is intended for use on garden gates when the gate is set back from the front of the posts. *The ideal distance between the gate and the post is 1 3/8"*. The minimum thickness for the gate is 2". Gate posts 5" square or greater are recommended.

## Installation

1. Determine the level at which the rings are to be mounted on the gate and mark where the keystone will go through the gate. Drill a hole 3/4" in diameter so that the center of the hole is 2" from the edge of the gate.
2. In the center of the edge of the gate mortise a hole 2" high, 3" deep, and 3/4" wide. The bottom of this mortise should be 3/4" below the center of the hole drilled for the keystone.
3. Mortise the edge of the gate so that the escutcheon plate surface is flush with the surface of the gate.
4. Cut the keystone so that it is 3/4" to 7/8" longer than the thickness of the gate.
5. Install one of the twisted ring pulls (with 4 1" #8 screws) so that it is centered over the keystone hole.
6. Insert one end of the keystone through the hole on the other side engaging the square hole in the striker bar (inserted into the gate through the mortise) and then engaging the square hole in the back of the ring pull installed in step 5 above. Install the second ring pull (with 4 1" #8 screws) on the other side of the gate.
7. Install the escutcheon plate (with 4 1 1/2" #8 screws) on the edge of the gate so that the latch bar protrudes through it.
8. With the gate mounted on its hinges place a mark on the latch post level with bottom of the striker bar.
9. Mount the latch plate and two spacers (with 2 2" # 12 screws) on the latch post so that the top edge of the spacer bar is 1/4" below the mark made in step 8 above. Ensure that the notch in the latch plate is situated so that the set back of the gate on the latch side equal the set back on the hinge side.

*See diagrams on reverse side.*



# MORTISED GATE LATCH