

# Field Gate Mounting Instructions

## Upper Band Installation

1. Mount the long (12" or longer for gates up to 48" width, 18" or longer for gates up to 84" width, or 24" for gates up to 120" in width) "double strap field gate band" on gate with 3/8" carriage bolts so that it is centered on the upper horizontal timber.
2. Measure the distance from the bottom of this band to the bottom of the gate. To this measurement add the clearance distance required between the bottom of the gate vertical stiles and the ground (this is usually about 2" but remember this distance will have to be increased if the gate opens to an inclining surface). This is the level at which the "hook to bolt (8317)" will be mounted" and should be marked on the hinge post..
3. Drill a 3/4" hole at the established point through the entire post. It is essential that this hole be perpendicular to the post. If the post is hardwood it may be necessary to enlarge the hole to 7/8" for about the first 1 1/2 to 2 inches. Insert the "hook to bolt" into the hole ensuring that the pin which will encounter the eye on the "double strap field gate band" is pointing up and aligned vertically. Once the thread protrudes from the opposite side install the washer and nut. Tighten the nut so that the center of the pin is about 2 1/2 inches from the post. Remove excess threaded material with a hack saw.

## Lower Band and Hook Installation

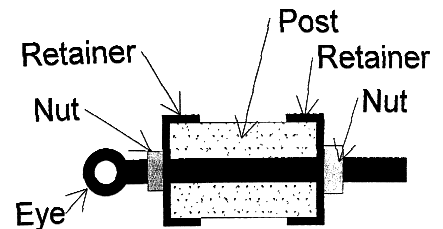
*Please Note: We strongly recommend the "Adjustable Bottom Gate Fitting" for the bottom of the gate especially in areas where frost heaving of the posts could be a problem.*

### Band Installation

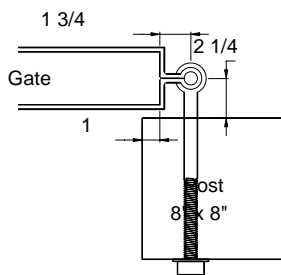
If a bottom 5 inch "double strap field gate band" is used then it is installed much the same as above.

### Adjustable Bottom Gate Fitting Installation

1. Install the fitting on the hinge stile between the bottom horizontal and the one above it keeping it as low as possible but not interfering with the diagonal support.
2. Drill a 3/4" hole for the "eye bolt" at least 1 1/2 inches above the bottom horizontal timber.
3. Thread nut on "eye bolt". Push "eye bolt" through first "retainer", through hole in stile, through second "retainer", and the thread on nut.
4. Measure the distance from the bottom of the eye on "double strap field gate band" to the bottom of the eye on the "eye bolt". Measure from the center of the "hook to bolt" and mark the post for the bottom "hook to drive"
5. Make a mark 2" plus the gate overlap distance from the gate side edge of the post. Drill a 3/4" hole perpendicular to the post and install the second "hook to bolt" as in # 3 under "upper band installation".
6. Place the gate on the pins and adjust the "adjustable bottom gate fitting" so that the gate is level.

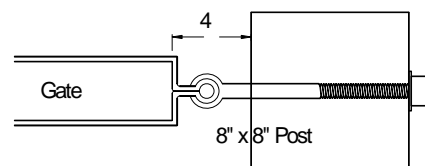


*Tip: To prevent the gate from being lifted off the pins it is advisable to drill a small hole in the bottom pin above the eye of the bolt and install a small bolt and nut or a self tapping screw.*



### Behind Post Hinge Mount

Gate Overlaps Post 1" for an 8" square post or 1/2" for a 6" square post



### Between Posts Hinge Mount

4" Space Between Gate and Post Permits Gate to Swing Both Ways

Snug Cottage Imports Inc., London, Ontario, Canada and Port Huron, Michigan, USA

Phone (519) 473-2794 Fax (519) 474-3337

[www.snugcottagehardware.com](http://www.snugcottagehardware.com)